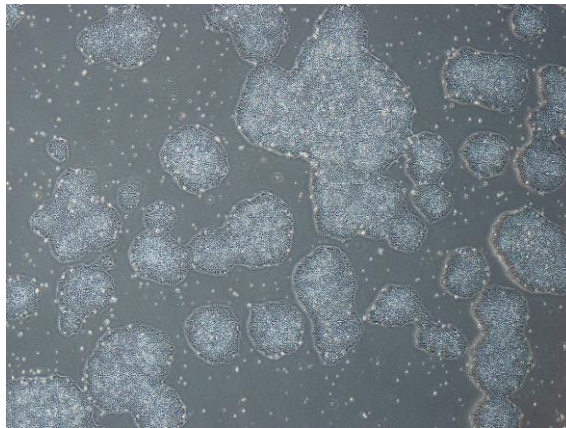


## 【 CiRA-j-1256 】 Morphology of iPSC colonies

CiRA-j-1256-A: passage-3



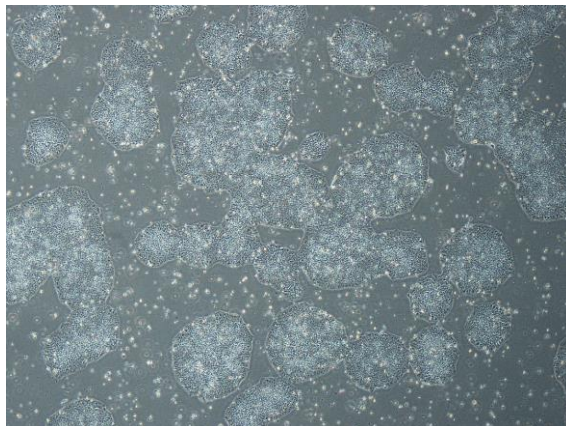
CiRA-j-1256-B: passage-3



CiRA-j-1256-C: passage-3



CiRA-j-1256-D: passage-3



CiRA-j-1256-E: passage-3



CiRA-j-1256-F: passage-3



( All images were captured at 4x magnification )